

Names

Images

Uses

1. Tape Measure



✓ used to measure distance or size.

2. Electrical Tape



✓ Used to cover and insulate various cables, wires, and other materials that conduct electricity.

3. Cable Ties

✓ Used for holding items together, most commonly electrical cables or wires.



4. Solder Capillary Lead-Free Wire

✓ Used to produce perfect joints quickly and effectively.



5. Electric Drill

✓ Used for drilling circular holes in the material.



6. Level

✓ Used to determine whether a surface is horizontal (level) or vertical (plumb).



7. Wire/Cable Lugs

✓ Used for connecting cables to electrical appliances, other cables, surfaces, or mechanisms.



8. Super Fire 2 Torch

✓ Used for soldering and brazing.



9. Coax Connector



✓ Used for connecting cables to electrical appliances, other cables, surfaces, or mechanisms.

10. Flux Brush



✓ Used in connections that are joined together by soldering.

11. Wire Strippers



✓ Used for removing the protective coating of an electric wire to replace or repair the wire.

12. Fish Tape



✓ Used for pulling electrical or other wires through conduits.

13. Hacksaw



✓ Used for cutting thin metal such as aluminum, brass, steel, or copper.

14. Pliers



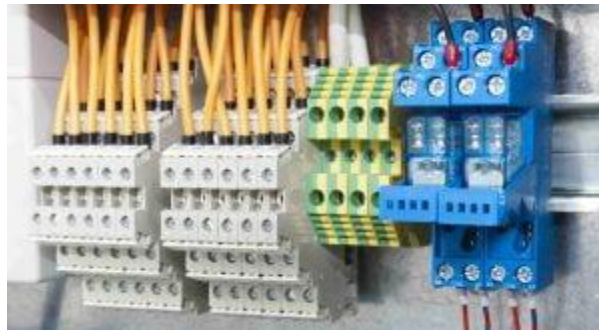
✓ Used for gripping.

15. Fishing Rods



✓ Used to install wires above ceilings, in attics, through walls, etc.

16. Terminal Block



✓ Used to secure and terminate wires

17. Voltage Tester



✓ Used primarily on AC currents, although some can also be used on DC currents.

18. Crimpers



✓ Used to make cold weld joints between wires and a connector by deforming one or both to hold the other.

19. Gloves



✓ Used to protect and comfort hands against cold or heat, damage by friction, abrasion or chemicals, and disease

20. Line Tester



✓ used to test current presence and identify phase / live wire in electrical installations.

21. Reaming Bit



✓ Used as a cutting tool.

22. Conduit Bender



✓ Used to bend electrical pipes for installation.

23. Goggles



✓ Used to shield the eyes against liquid or chemical splash, irritating mists.

24. Heat Shields/Pads

✓ Used to protect objects from overheating.



25. Stubby screwdriver

✓ Used to facilitate access to **screws** located in areas that cannot be reached easily by a regular screwdriver.



26. Flashlights

✓ Used to provide a source of light at a time of night.



**27. Rescue
Rod/Hook**



✓ Used to remove persons incapacitated by electrical shock from the danger area.

28. Screwdrivers



✓ Used for the insertion and removal of screws.

29. Wrenches



✓ Used for gripping, fastening, turning, tightening, and loosening things like pipes, pipe fittings, nuts, and bolts.

30. Hammer



✓ Used for driving, shaping, and breaking.

31. Utility knife



✓ Used for cutting.



Utility knife

32. Multimeter



✓ Used to measure multiple electrical values.



Multimeter

33. Ground fault circuit interrupter (GFCI) tester



✓ Used for testing GFCI breakers.

34. Sandpaper



✓ Used for light sanding between coats.

Sandpaper

35. Hot Air Blower



✓ Used for cleaning machines and devices and drying water traces or coatings.

36. Variety of Screwdrivers & Wrenches



37. Allen Wrench Set (Hex Set)

✓ Used to tighten or loosen hexagonal-shaped bolts and screws.



Allen Wrench Set (Hex Set)

38. Cordless Power Drill Driver Kit

✓ Used to drill holes in metal, plastics, wood, and stone, as well as drive screws with an electric screwdriver.



Cordless Power Drill Driver Kit

39. LED Headlamp



✓ Used to increase visibility.



LED Headlamp

40. Magnetic Parts Tray



✓ Used to collect screws, nuts & bolts, etc.



Magnetic Parts Tray

41. Multi-Hole Step Bit



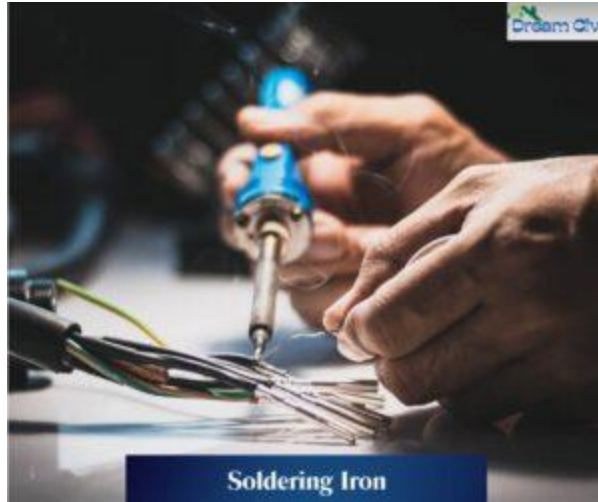
✓ Used to cut holes in aluminum or steel electrical panels.

42. Hole Saw Kit



✓ Used to saw holes, especially on Gypsum and soft things.

43. Soldering Iron



✓ Used for soldering wires together.

44. Ratcheting Cable Cutter



✓ Used for cutting communication cables up to 85mm in diameter.

45. Conduit Lubricant



✓ Used to reduce the friction of a cable while pulling into a conduit



Conduit Lubricant